

定位旋转设备 Positioning & Rotating Equipment

焊接滚轮架 Welding Rotator

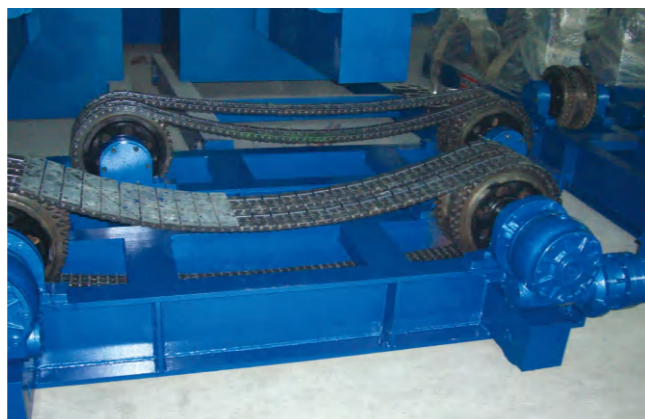
该滚轮架系列分为自调式、可调式、平车式、可倾斜式、防轴向窜动式等多种形式。用于圆柱形筒体的焊接、抛光、衬胶及装配，自调节式滚轮架可根据筒体大小自行调节，可调式滚轮架可采用丝杆调节、螺钉分档调节，速度采用交流变频器控制，线速度为数字显示，先进可靠。本公司还可根据用户需要设计定制各利类型的滚轮架。

Welding rotator is a kind of our advanced welding equipment, which is researched and manufactured absorbing domestic and international advanced equipment. It is mainly used for pipe, containers, boilers, pressure vessels, oil tank and other cylinder's assembling, burnishing and welding, can use together with column and boom and SAW system to realize inside and outside girth and longitudinal welding. Its series includes self aligning rotators (SAR), and conventional rotators (WR). Other customize have trolley tilting anti drift rotator; Accordingly this device has advantages of compact structure, small cubage, beautiful shape, lightweight, convenient operating and so on. The machine can assort all kinds of auto welding or manual welding, improving welding quality, lessening welding labor and improve productivity.

We can provide solutions to unique welding rotator according to the customer's requirement.



自调式滚轮架 Self Aligning Rotator



定位旋转设备 Positioning & Rotating Equipment

自调式滚轮架 Self Aligning Rotator

型号 Model (国内 型号 HGZ##)	最大承载重量 Max load capacity Tons	应用直径范围 Vessel diameter mm Φd-ΦD	滚轮直径宽度 Diameter and width of wheel		电机功率 Motor power kw	小于D3时承重 Max load when only two roller @D3		旋转速度 Wheel speed m/min	外形尺寸 Overall Dim. (L × W × H)		毛重 G.W Tons
			橡胶轮 mm Rubber D1 × W1	金属轮 mm Metal D2 × W2		Max load	D3 (mm)		主动 mm Power	被动 mm Idler	
SAR5	5	250*2300	250*100	2*240*20	0.75	3.75	757	0.1*1	1620*690*700	1380*380*700	0.85
SAR10	10	320*2800	300*120	2*290*25	1.1	7.5	910		1880*780*820	1454*390*820	1.2
SAR20	20	500*3500	350*120	2*340*30	1.5	15	1157		2250*930*950	1920*490*950	2.0
SAR40	40	600*4200	400*120	2*390*40	3	30	1388		2500*1015*1050	2180*530*1050	3.5
SAR60	60	750*4800	450*120	2*440*50	4	45	1540		3000*1200*1100	2550*650*1100	4.1
SAR80	80	850*5000	500*120	2*490*60	4	60	1720		3200*1200*1250	2700*750*1250	5.8
SAR100	100	1000*5500	500*120	2*490*80	5.5	75	2000		3500*1410*1350	3000*780*1350	6.7
SAR150	150	1000*6000	/	500*220	6	112	2054		4200*900*1450	3250*550*1450	7.2
SAR200	200	1800*8000	/	550*260	7.5	150	2730		4800*900*1500	3480*550*1500	10.0
SAR250	250	1800*8000	/	660*260	11	188	2838		5010*1113*1600	3800*790*1600	13.0
SAR500	500	1800*8000	/	800*300	15	375	3144		5600*1370*2100	4600*900*2100	27.0

Notes:

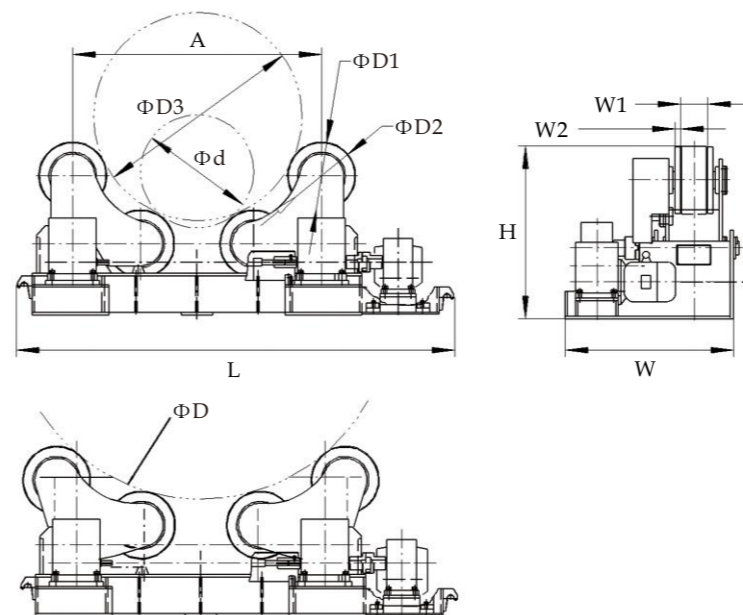
- a) Variable rotation speed from 100 to 1000 mm/min: included
- b) Wheels padded with heavy duty rubber: Included on models SAR 100 and smaller
- c) Remote control box with 6-12 m span: included, and allows adjustment of rotating speed digital display in mm/min, forward and reverse rotation, and stop
- d) Auto adjusted tilt angle of roller bed as per diameter of work piece
- e) Shot blasted frame at SA 2 1/2: included
- f) Variable Frequency Driver (VFD) made by Teco or other brand
- g) Custom built welding rotators: available
- h) CE mark only under customer request
- i) The information contained in this brochure is intended to be accurate. However the manufacturer retain the rights to make changes in design which may not be include

Standard package includes:

One power unit with control box One idler unit Operation manual One year warranty

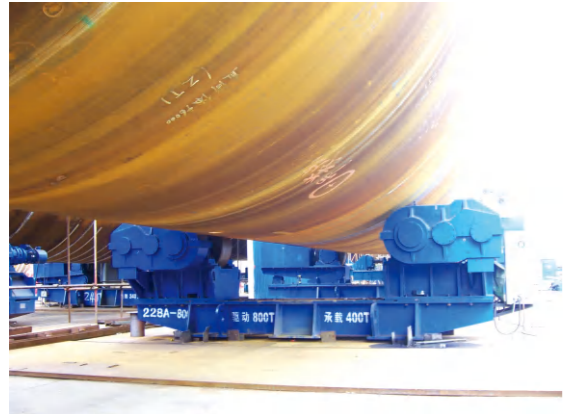
Optional:

+Turning rolls mounted over manual or motorized bogies + Synchronized operation of multi number of power rotators + Pu roller instead of rubber roller



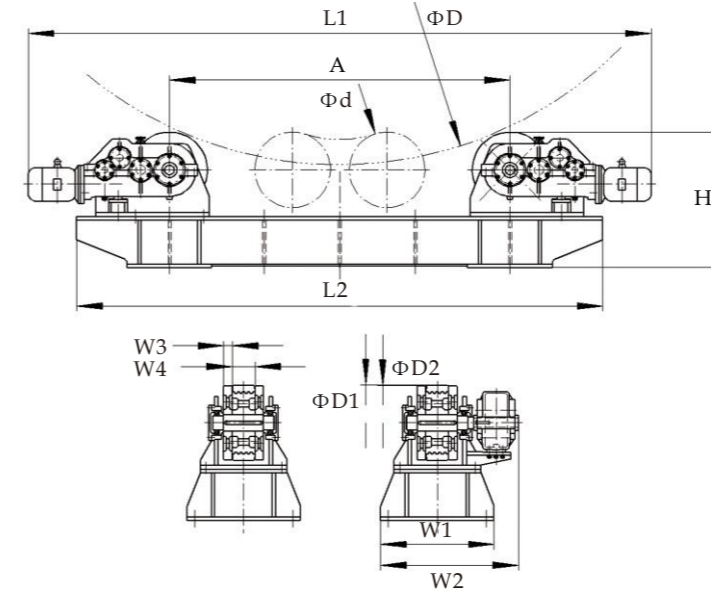
定位旋转设备
Positioning & Rotating Equipment

可调式滚轮架
Conventional Rotator



定位旋转设备
Positioning & Rotating Equipment

可调式滚轮架
Conventional Rotator



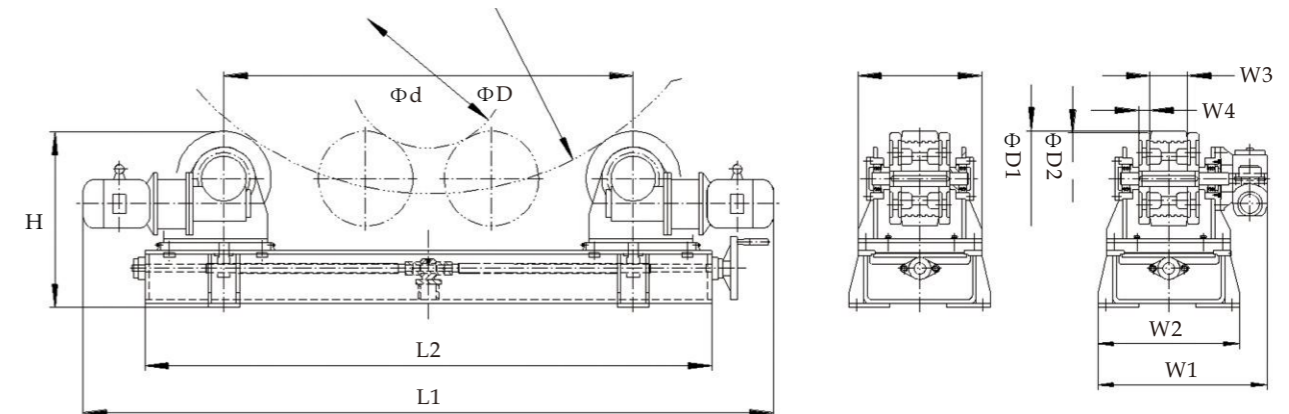
型号 Model (国内型号 HGK#)	最大承重 Max load capacity tons	工件范围 Vessel diameter Φ-d-ΦD mm	滚轮直径/宽度 Diameter and width of wheel		滚轮间距 Wheel distance adjust way	电机功率 Motor power kw	旋转速度 Wheel speed m/min	外形尺寸 Overall Dim.(L × W × H)		毛重 G.W. tons
			橡胶轮 mm Rubber D1 × W3	金属轮 mm Metal D2 × W4				主动 Power L1 × W1 × H	被动 Idler L2 × W2 × H	
WR2	2	250*1800	200*80	2*190*16	螺旋分度 Adjust by manual lead screw or bolt separately	2*0.18	0.1*1	1260*500*410	1260*350*410	0.45
WR3	3	250*1800	200*80	2*190*16		2*0.25		1260*500*410	1260*350*410	0.50
WR5	5	250*2300	250*100	2*240*20		2*0.37		2000*500*480	1600*380*480	0.90
WR10	10	320*2800	300*120	2*290*25		2*0.55		2440*610*550	2320*450*550	1.6
WR20	20	500*3500	350*120	2*340*30		2*1.1		3100*675*660	2500*500*660	2.0
WR40	40	600*4200	400*120	2*390*40		2*1.5		3300*700*720	2600*600*720	2.5
WR60	60	700*5000	450*120	2*440*50		2*2.2		3800*870*830	3000*650*830	3.1
WR80	80	700*5500	500*120	2*490*60		2*3		4380*900*870	3400*700*890	3.4
WR100	100	700*6000	500*120	2*490*80		2*3		4380*970*980	3800*760*980	5.8
WR150	150	1000*6000	/	500*260		2*4		4500*1000*1060	4050*800*1060	7.5
WR250	250	1000*7500	/	660*260	2*5.5	4900*1060*1100	4380*920*1100	11.0		
WR400	400	1000*7500	/	700*300	2*5.5	5900*1140*1180	5500*920*1180	17.5		
WR500	500	1000*8000	/	800*350	2*7.5	6200*1280*1350	5700*1000*1350	22.3		
WR600	600	1500*8500	/	850*360	2*7.5	6900*1300*1600	6000*1200*1600	27.5		
WR800	800	1500*9000	/	900*380	2*11	7100*1400*1600	6500*1260*1600	30.0		
WR1000	1000	1500*10000	/	1000*350	2*15	7500*1600*1700	7000*1320*1700	40.0		
WR1200	1200	1500*12000	/	1000*450	2*15	8380*1600*1800	7200*1320*1800	51.0		

Notes:

- a) Variable rotation speed from 100 to 1000 mm/min: included
- b) Wheels padded with heavy duty rubber: Included on models WR-100 and smaller
- c) Remote control box with 6-12 m span: included, and allows adjustment of rotating speed digital display in mm/min-, forward and reverse rotation, and stop
- d) Custom built --LD stands for large diameter vessels
- e) Shot blasted frame at SA 2 1/2: included
- f) Variable Frequency Driver (VFD) made by Teco other brand
- g) Custom built welding rotators available
- h) CE mark only under customer request
- i) The information contained in this brochure is intended to be accurate. However the manufacturer retain the rights to make changes in design which may not be include

Optional:

- +Turning rolls mounted over manual or motorized bogies
- +Synchronized operation of multi number of power rotators
- +Anti drifting function including one side uplift and double uplift.
- + Pu roller instead of rubber roller



定位旋转设备 Positioning & Rotating Equipment

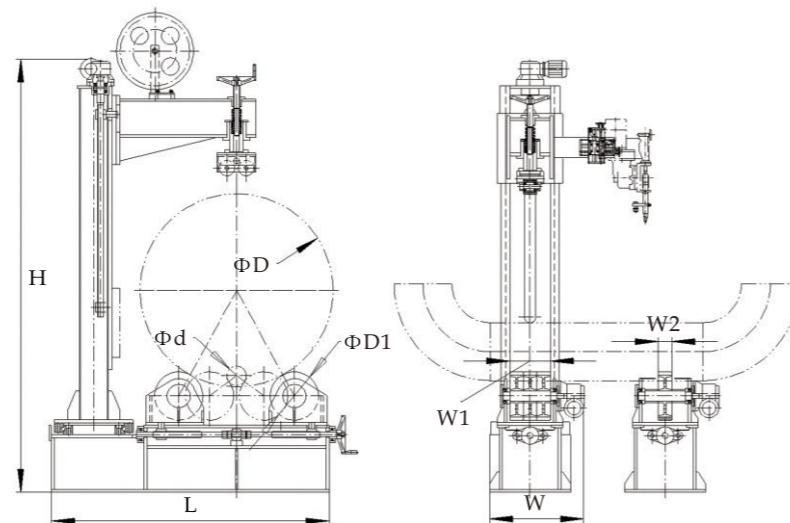
管子滚轮架 Pipe Rotator

该滚轮架主要用于中小直径的短管与法兰、弯头及短管对接的焊接，可以提高生产效率、增强自动化程度、减轻焊工劳动强度、适应工厂化预制的迫切需要。本机采用管子转动、焊接机头相对固定的方式实现自动焊接，焊接工艺采用高效率、低成本的气体保护焊或埋弧自动焊，操作简单、性能可靠，适用范围广。

Pipe rotator is specially designed and manufactured for the purpose of meeting the requirements of enhancing productivity, increasing the extent of automatic, reducing welder's working intensity and adapting to piping workshop prefabrication. The welding head will be relatively fixed, while the piping spool piece revolving at a specific rate, and the high efficient and low cost shielded welding or SAW process is adopted, so it has the features of easy-operation, reliable-performance and wide-application field.



型号 Model	工件范围 Pipe diameter Φd-ΦD	最大承重 Max load capacity	滚轮直径 宽度 Diameter and width of wheel D1 × W1	接头形式 Welding seam	立柱升降 Column elevating	电机功率 kw Motor power	旋转速度 m/min Wheel speed	外形尺寸 Overall Dim (L × W × H)	毛重 G.W tons
PR0.5	0.5	50*350	200*50	管+管、 管+管件、 管件+管件 Pipe+pipe, pipe +piece, piece +piece	Manual	0.37	0.1*1	1260*500*410	0.40
PR1	1	50*426	200*50			0.55		1260*500*410	0.50
PR5	5	50*630	250*140		Motorized	1.3		1900*1500*700	1.2
PR10	10	100*1000	300*210			1.6		2240*1510*800	1.7



定位旋转设备 Positioning & Rotating Equipment

焊接滚轮架 Welding Rotator



100吨PU轮滚轮架
SAR100 rotator with PU roller



40吨自调式滚轮架
SAR40 welding rotator



800吨可调式滚轮架
WR800 combo type rotator



500吨自调式滚轮架
SAR500 welding rotator



100吨行走式滚轮架
SAR100 welding rotator with motorize bogies



200吨自调式滚轮架
SAR200 welding rotator

定位旋转设备
Positioning & Rotating Equipment

焊接滚轮架
Welding Rotator



喷漆滚轮架
SAR rotator for painting



自调式滚轮架
Self aligning rotator



60吨自调式滚轮架
SAR60 welding rotator



1200吨可调式滚轮架
WR1200 welding rotator



600吨组合滚轮架
WR600 combo type rotator



防爆滚轮架
Explosion proof rotator



20吨装配滚轮架
WR20 fit up type rotator



行走式150吨滚轮架
SAR150 welding rotator with idler bogies



压紧式滚轮架
Pipe rotator



400吨滚轮架
WR400 rotator



移动式160吨滚轮架
WR160 welding rotator with idler bogies



电站转子滚轮架
Custom built rotator

定位旋转设备
Positioning & Rotating Equipment

焊接滚轮架
Welding Rotator